



► Applications

- Financial Institutions
- Large Retailers
- Processors

Fast, Secure, Real-Time Logging Record Collection

Hypercom's LogARithm™ is a PC-based logging record tracking application, consisting of two components:

- Client
- Server

The LogARithm Client component displays the collected statistics as well as any configurable statistical thresholds. It also has the ability to authorize users for all networks or for a single network only.

The LogARithm Server component is capable of handling volumes of up to 50 million records a day, depending on the speed and performance of the underlying hardware and CPU. The Server component also maintains a separate statistic database based on records that it collects and a viewable list of received records as they are processed.

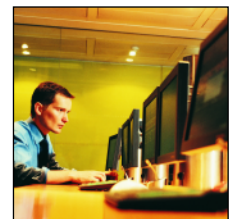
In addition to its record tracking capability, LogARithm also provides a number of management and monitoring tools based on the received information.



Simple installation



Securely manage authorized users



Monitoring tools available

FAST, SECURE, REAL-TIME LOGGING RECORD COLLECTION.



- Architecture** ► LogARithm based on client/server architecture
- Data format** ► Saves records in CSV text file or SQL Server database
- Tools available** ► Management and monitoring tools based on received information
- Capability** ► Server handles up to 50 million records a day
- Real-time data** ► Statistical data displays on the client application
- User interface** ► Available for viewing collected statistics and monitoring configurable statistical thresholds

LogARithm™

FAST, SECURE, REAL-TIME LOGGING RECORD COLLECTION.

TECHNICAL SPECIFICATIONS:

SERVER REQUIREMENTS

- CPU: Intel Pentium 4, 2.6GHz or better
- Operating System: Microsoft Windows 2000 Server with Service Pack 4 or later or Windows XP Professional or Microsoft Windows 2003 Server
- Display: 1152 x 764 High Color or True Color
- Memory: 512 Mbytes minimum, 1Gbyte recommended
- Hard drive (approximate storage requirements): CSV - 7,300 records per Mbyte, SQL Server - 5,000 records per Mbyte

CLIENT REQUIREMENTS

- CPU: Intel Pentium 4, 2.0GHz or better
- Operating System: Microsoft Windows 2000 Workstation with Service Pack 4 or later or Windows XP Professional
- Display: 1152 x 764 High Color or True Color
- Memory: 256 Mbytes minimum

Fast Performance

- Server capable of handling volumes of up to 50 million records a day, depending on the speed and performance of the underlying hardware and CPU
- Built on a framework that relies on standards and industry experience.

Real-Time Processing

- Server maintains a separate statistic database based on records that it collects and a viewable list of received records as they are processed
- Client interface displays collected statistics as well as configurable statistical thresholds
- Client/server architecture provides comprehensive activity and performance statistics as well as pop-up messages and configurable email alerts.

Secure Environment

- Security system limits users' ability to access components. Limited clients do not receive information about unauthorized networks
- Client users can be authorized for all networks or a single network
- A separate client application provides the capability of displaying statistics based on the received records.

OTHER OPTIONAL COMPONENTS



HYPERCOMVIEW SOFTWARE

© 2007 Hypercom Corporation, all rights reserved. Hypercom is a registered trademark of Hypercom Corporation. The Hypercom logo is a trademark of Hypercom Corporation. All other products or services mentioned in this document are trademarks, service marks, registered trademarks or registered service marks of their respective owners. Product Specifications subject to change without notice. 940482-001, Rev B October 2007



www.hypercomlac.com